

The Moanie Grown Up Blues



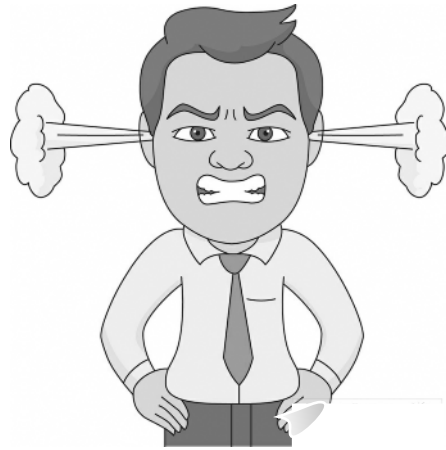
Percussion
Xylophone
Recorder
Keyboard
Ukulele
Guitar

simple ensemble

easy ensemble for the small music group
or the *WHOLE* class

By Peter Sills


The Moanie Grown Up Blues



Contents

Score	1
First Melody	2
Second Melody	3
Where To Find the Notes	4
Singing	5
Percussion	6
Tips	7

The Moanie Grown Up Blues


 swing feel

Intro/Outro

fine Verse

Mel 1: A G F E *fine* A G F E

Mel 2: A C E D B G F A C B A C D E D C A
 Got the moa nie grown up blues
 Love to tell us what to do

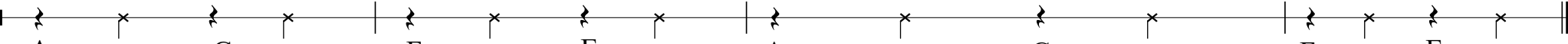
Perc: 

Chords: Am G F E *fine* Am G F E

D.C al fine

Mel 1: A G F E A G F E

Mel 2: A A G F F E A C D E D C A
 Don't do this Don't do that Got the moa nie grown up blues

Perc: 

Chords: Am G F E Am G F E

easy view



The **Moanie Grown Up Blues**

Simple Ensemble

Melody 1

A G F E

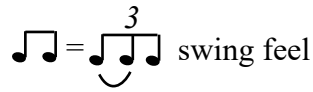
Played throughout song

Melody 2

The Moanie Grown Up Blues

Simple Ensemble

INTRO

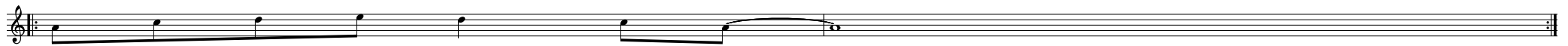


A C \dot{E} D B G F A C B



VERSE

A C D \dot{E} D C A

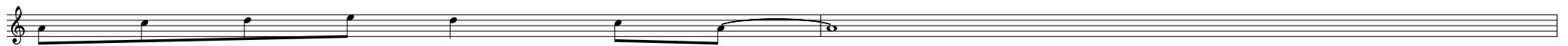


X2 

A A G F F E



A C D \dot{E} D C A



OUTRO

A \dot{C} \dot{E} \dot{D} B G F A \dot{C} B A

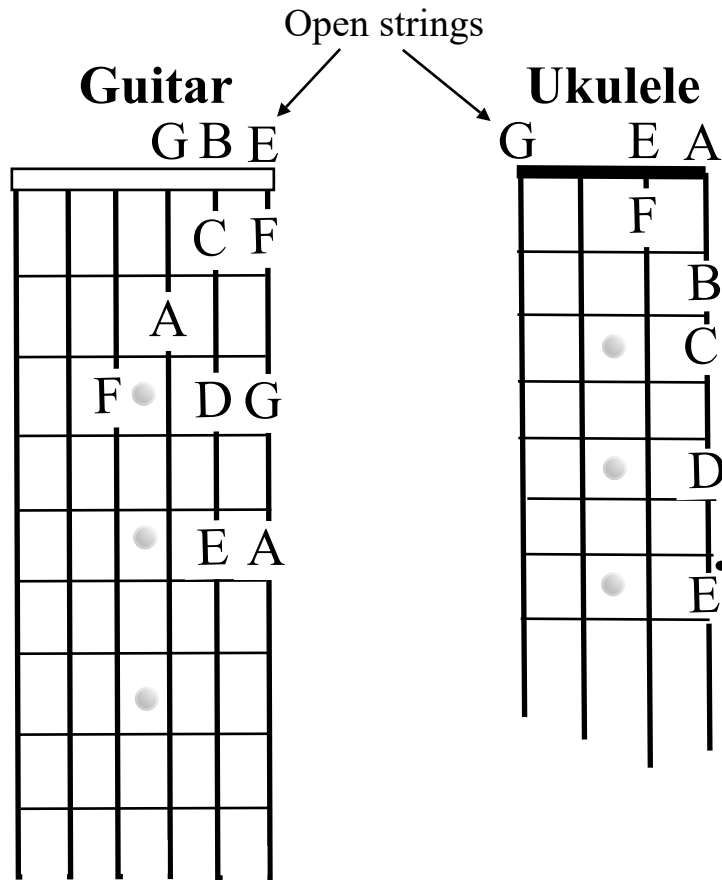
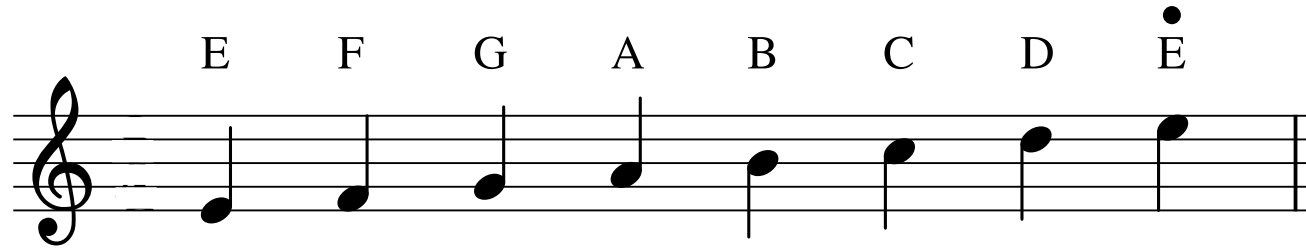


X2 

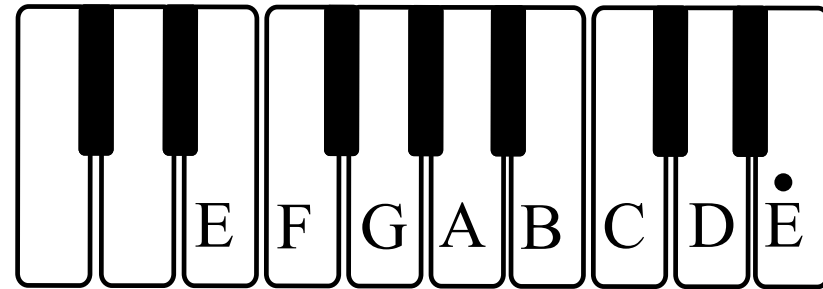
The Moanie Grown Up Blues

Simple Ensemble

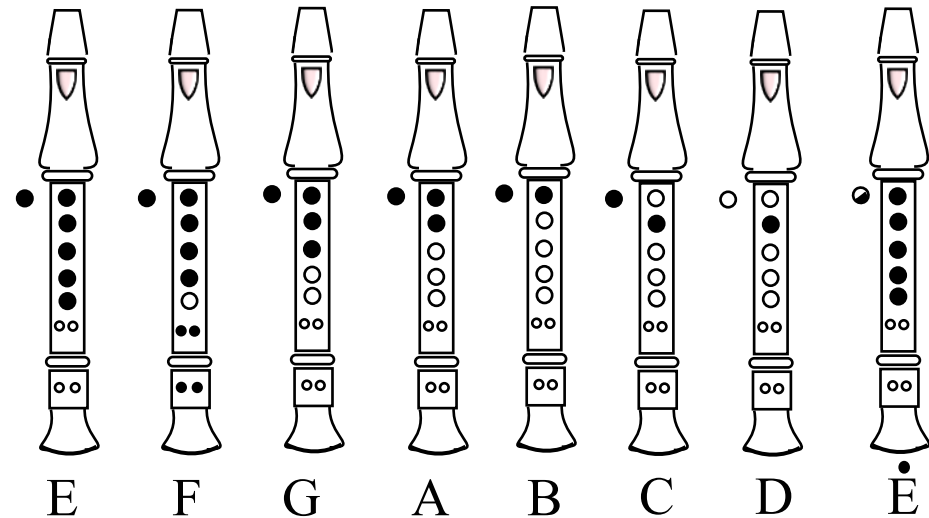
Where to find the notes



Keyboard/Xylophone



Recorder



"Don't do this, don't do that" is played an octave higher on the first string: A A G - F F E

The Moanie Grown Up Blues

Simple Ensemble

Lyrics

Got the moanie grown up blues
Love to tell us what to do
Don't do this - Don't do that
Got the moanie grown up blues

You may wish to kick off your performance of this song with a little poem...

Poem

Life isn't always easy, It's full of trouble and strife
My mum tells me these school days are the best years of our life
My teacher says I'm messy I don't pay enough attention
Dad calls me names I really shouldn't mention...

The Moanie Grown Up Blues

Simple Ensemble

Percussionists play simple but effective off-beats with this song. If you have a drum kit, here is a very easy drum pattern that is most effective with the Moanie Grown Up Blues.

The image shows a musical score for a drum pattern in 4/4 time. It consists of four staves: Drum (top two staves), Percussion (bottom staff), and a label 'Drum' on the left side. The time signature is 4/4. The pattern is as follows:

- Hi-hat:** Indicated by 'x' marks on the top staff. It plays on the off-beats (2, 4, 6, 8) of every measure.
- Snare-drum:** Indicated by 'x' marks on the second staff. It plays on the off-beats (2, 4, 6, 8) of every measure.
- Bass-drum:** Indicated by solid black circles on the bottom staff. It plays on the downbeats (1, 3) of every measure.
- Percussion:** The bottom staff shows a pattern of eighth notes with accents on the off-beats (2, 4, 6, 8) of every measure.

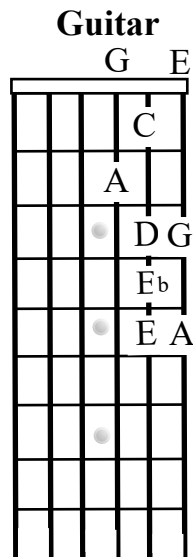
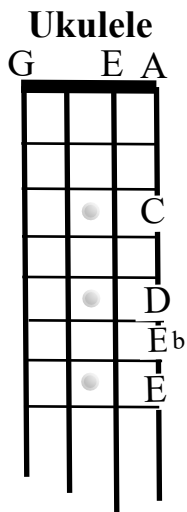
The Moanie Grown Up Blues

Keyboard Capers

Here's a challenge: try playing melody 1 and melody 2 on the keyboard - at the same time. It makes for a really effective feature.

Improvisation

Blues music lends itself to improvisation - making up your own melodies as you go along. You can play over the four chords of the Moanie Grown Up Blues Song (Am - G - F - E) using the notes of the A minor pentatonic scale plus the E flat note to give your solo that authentic blues feel. You can play the notes in any order you wish using different rhythms. Start off with a few notes close together and experiment with various note and rhythm combinations.



A C D E G Eb

A minor pentatonic scale E flat blues note

